

CONTENTS

In session order

Hot Topics in the Interaction between Trusts and Relationship Property

Hot Topics in the Interaction between Trusts and Relationship Property 1

Vanessa Bruton and Isaac Hikaka

Double Trouble – the power to appoint and remove trustees and the power to add and remove beneficiaries

Double Trouble – the power to add and remove beneficiaries and the power to appoint and remove trustees 33

Jessica Palmer and Nicola Peart

Supervision of Trusts – the jurisdiction of the courts to intervene

Supervision of Trusts – the jurisdiction of the courts to intervene 53

Jeremy Johnson

Drafting Issues

Drafting Issues 77

Chris Kelly and Greg Kelly

Acting as an Independent Trustee – are you really, really sure you want to?

Independent’s Day Stand Up and Be Counted 99

Sally Morris and Juliet Moses

Tax Planning and Trusts – drawing the line

Tax Planning and Trusts – drawing the line..... 141

Stephen Tomlinson and Graham Tubb

Disclosure, Privilege and Confidentiality – a tangled web?

Disclosure, Privilege and Confidentiality – a tangled web? 161

Lois Black and Bill Patterson

Indemnities, Retirement and Removal

Indemnities, Retirement and Removal 189

Helen Dervan and Jeffrey Kenny

Unanimity Rule

The Trustee Unanimity Rule 223

John Brown

Practical Implications of FATCA for Trusts

Practical Implications of FATCA for Trusts 239

Zoe Barnes and Andrew Ryan

Trust Assets – available remedies in relationship property context

How Far Can Trusts Be Trusted When a Relationship Breaks Down
– frequently asked questions 263

Ewan Eggleston and Simon Jefferson QC

Key Issues in Remedies in Trusts Law

Key Issues in Remedies in Trusts Law 299

Prof Charles Rickett

Pot Pourri Case Law Update

Pot Pourri Case Law Update 325

Dr Andrew Butler

CONTENTS

Alphabetical by author/presenter

Author		Title	Page
Barnes	Zoe	Practical Implications of FATCA for Trusts <i>Joint paper with Andrew Ryan</i>	239
Black	Lois	Disclosure, Privilege and Confidentiality – a tangled web? <i>Joint paper with Bill Patterson</i>	161
Brown	John	Unanimity Rule	223
Bruton	Vanessa	Hot Topics in the Interaction between Trusts and Relationship Property <i>Joint paper with Isaac Hikaka</i>	1
Butler	Dr Andrew	Pot Pourri Case Law Update	325
Dervan	Helen	Indemnities, Retirement and Removal <i>Joint paper with Jeffrey Kenny</i>	189
Eggleston	Ewan	Trust Assets – available remedies in relationship property context <i>Joint paper with Simon Jefferson QC</i>	263
Hikaka	Isaac	Hot Topics in the Interaction between Trusts and Relationship Property <i>Joint paper with Vanessa Bruton</i>	1
Jefferson QC	Simon	Trust Assets – available remedies in relationship property context <i>Joint paper with Ewan Eggleston</i>	263
Johnson	Jeremy	Supervision of Trusts – the jurisdiction of the courts to intervene	53

Kelly	Chris	Drafting Issues <i>Joint paper with Greg Kelly</i>	77
Kelly	Greg	Drafting Issues <i>Joint paper with Chris Kelly</i>	77
Kenny	Jeffrey	Indemnities, Retirement and Removal <i>Joint paper with Helen Dervan</i>	189
Morris	Sally	Acting as an Independent Trustee – are you really, really sure you want to? <i>Joint paper with Juliet Moses</i>	99
Moses	Juliet	Acting as an Independent Trustee – are you really, really sure you want to? <i>Joint paper with Sally Morris</i>	99
Palmer	Jessica	Double Trouble – the power to appoint and remove trustees and the power to add and remove beneficiaries <i>Joint paper with Nicola Peart</i>	33
Patterson	Bill	Disclosure, Privilege and Confidentiality – a tangled web? <i>Joint paper with Lois Black</i>	161
Peart	Nicola	Double Trouble – the power to appoint and remove trustees and the power to add and remove beneficiaries <i>Joint paper with Jessica Palmer</i>	33
Rickett	Prof Charles	Key Issues in Remedies in Trusts Law	299
Ryan	Andrew	Practical Implications of FATCA for Trusts <i>Joint paper with Zoe Barnes</i>	239

Tomlinson	Stephen	Tax Planning and Trusts – drawing the line <i>Joint paper with Graham Tubb</i>	141
Tubb	Graham	Tax Planning and Trusts – drawing the line <i>Joint paper with Stephen Tomlinson</i>	141

CHAIR



Greg Kelly, Greg Kelly Law, Wellington

Greg has over 35 years' experience in the wills, trusts and estate area. He is a member of the NZLS Property Law and Family Law Sections, and of STEP and chaired the NZLS CLE Trust Conferences in 2009 and 2011. Greg is a contributor to Butterworth's *Law of Trusts*, probate and administration author for *McGechan on Procedure*, co-author of *Garrow and Kelly's Law of Trusts and Trustees* (6th and 7th editions) and of *Dobbies' Probate and Administration Practice* (5th and 6th editions).

KEYNOTE SPEAKER



Hon Amy Adams, Wellington

Hon Amy Adams became a Member of Parliament at the 2008 General Election, representing the large rural electorate of Selwyn in the Canterbury province. Following the 2014 General Election Minister Adams became the Minister of Justice, Minister for Courts, Minister of Broadcasting and Minister for Communications. She has previously held the roles of Minister for the Environment and Minister for Communications and Information Technology, Minister for Internal Affairs and Associate Minister for Canterbury Earthquake Recovery. Before being elected to Parliament, Minister Adams was a partner with law firm Mortlock McCormack Law in Christchurch, specialising in commercial and property law. Minister Adams lives in Canterbury, with her husband Don on their 250 hectare sheep and crop farm in Aylesbury, mid-Canterbury. They have two children who are the sixth generation of the family to live in the area.

SPEAKERS



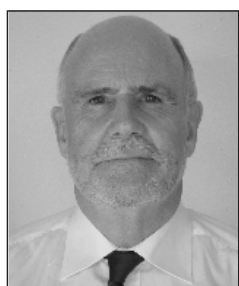
Zoe Barnes, Minter Ellison Rudd Watts, Auckland

Zoe is a solicitor in the tax team at Minter Ellison Rudd Watts. She advises a range of clients including large corporates, insurers, investment funds and private individuals. Zoe's experience includes providing advice in relation to GST, tax structuring, withholding taxes and FATCA.



Lois Black, TGT Legal, Auckland

Lois is a senior solicitor in the litigation team at TGT Legal. She specialises in trust, estate and relationship property litigation and dispute resolution for New Zealand and overseas clients.



John Brown, Barrister, Auckland

John is the author of *New Zealand Trusts & Asset Planning Guide* (CCH NZ Ltd) and the editor and contributing author of *New Zealand Master Trusts Guide* (3rd Ed). John also reports and headnotes *New Zealand Trust Reports* (NZTR). This is a law report series that reports judgments from the High Court and appellate courts in the area of trusts, including interlocutory and other judgments relevant to trust practitioners. It includes judgments from 1965 to the present day including a significant number of otherwise unreported judgments with a database of over 425 judgments and headnotes. John is a member of the STEP (Society of Trust and Estate Practitioners), a co-convenor for the Trusts Special Interest Group (CAANZ) and a member of the Institute of Financial Advisers (IFA).

SPEAKERS



Vanessa Bruton, Barrister, Auckland

Vanessa is an Auckland barrister, practising almost exclusively in trust and estate disputes, including relationship property disputes where trusts are involved. Her practice includes both domestic and international trust disputes where there is a New Zealand law or jurisdiction aspect. She is a member of STEP (Society of Trust and Estate Practitioners) and a frequent speaker at NZLS, ADLS and other seminars.



Dr Andrew Butler, Russell McVeagh, Wellington

Andrew obtained his BCL from University College Dublin, his LLM from Osgoode Hall, Toronto and PHD from the European University Institute, Florence. When he first arrived in New Zealand, Andrew taught in the Law Faculty at Victoria University, specialising in equity, trusts, restitution, human rights and public law. From 1999-2005 he was Crown Counsel working in the Human Rights Team at the Crown Law Office. He has been at Russell McVeagh since 2005, becoming a partner in 2007. Andrew has written extensively here and abroad on human rights and public law, and is the general editor of *Equity and Trusts in New Zealand* (2nd ed, Brookers, Wellington 2009).



Helen Dervan, Faculty of Law, AUT University, Auckland

Helen is a Senior Lecturer in Law at Auckland University of Technology. She sits on the academic committee of the Banking and Financial Services Law Association (Australasia) and on the education committee of the Society of Trust and Estate Practitioners (NZ). Her primary research interests focus on trusts, both commercial and domestic, and equitable issues in banking and commerce. Helen holds a BCL from the University of Oxford and practised in large firms in Auckland and the City of London specialising in banking, finance and general commercial litigation before commencing her academic career.



Ewan Eggleston, Barrister, Tauranga

Ewan is a barrister specialising in all aspects of family law including complex relationship property disputes. He has been in practice for over 16 years. His experience is broad based having worked both in New Zealand and for a number of years in Sydney Australia. Ewan holds dual practicing certificates and a Masters degree in International Law. He has previously presented at the Lexis Nexis forum and the Australian Family Law Conference.



Isaac Hikaka, LeeSalmonLong, Auckland

Isaac is a partner at the specialist dispute resolution firm, LeeSalmonLong. He has particular expertise in disputes involving the interaction between trusts and other areas of the law, including complex relationship property claims, international trust disputes and trust and regulatory issues. Isaac regularly appears as counsel in such disputes, and has acted for husbands, wives, trustees and beneficiaries.



Simon Jefferson QC, Barrister, Auckland

Simon Jefferson QC is a family law specialist with more than 30 years' experience who graduated from the University of Auckland, spending a number of years working overseas before returning in 1981. He is enrolled as a solicitor in England and Wales. In New Zealand he joined Shieff England Lawyers where he spent 24 years, 21 of those as a partner. Simon joined the independent bar in 2006 and became a Queen's Counsel in 2013. He has had extensive involvement with NZLS legal education programmes and the NZ Family Law section. Simon is a fellow of the International Academy of Matrimonial Lawyers, a member of Lawasia, the NZ Bar Association and of the Australian Family Law Section.

SPEAKERS



Jeremy Johnson, Wynn Williams, Christchurch

Jeremy is a partner in the Wynn Williams Litigation & Dispute Resolution team specialising in commercial, equity and trust law. He frequently acts in contentious trust cases, including the litigation around Christchurch Cathedral and also for private clients in disputes relating to trusts that hold significant business assets. Jeremy is recognised by Chambers 2015 Asia Pacific and Global Directories as being an “up and coming” practitioner in the field of Dispute Resolution. He is described in the directories as “an outstanding young trust lawyer”.



Chris Kelly, Chris Kelly Law, Wellington

Chris Kelly had a lengthy career with trustee organisations – holding positions such as District Public Trustee for Wellington and General Counsel at Guardian Trust – before moving to private practice. He is co-author of two leading legal texts: *Garrow & Kelly Law of Trusts and Trustees* (now in its 7th edition) and the 6th edition of *Dobbie’s Probate and Administration*. In addition to other publications, Chris has presented numerous papers at legal conferences and has chaired Elder Law Conferences. He completed a Master of Laws with a thesis on Trustee Accountability and is a member of the Society of Trust and Estate Practitioners (STEP).



Jeffrey Kenny, Wynn Williams, Christchurch

Jeff has 28 years’ experience in trust law. He is a member of the Wills and Trusts Committee and a member of the Trusts Law Review Working Group of the NZLS Property Law Section. Jeff is also a co-convenor of the Canterbury/Westland Branch of the NZICA Trusts Special Interests Group and a member of STEP. He is a contributing author of *New Zealand Conveyancing Law and Practice* published by CCH New Zealand and a contributing author of *Equity and Trusts in New Zealand* published by Thomson Reuters. Jeff is a previous presenter at the NZLS CLE Trusts Conference.



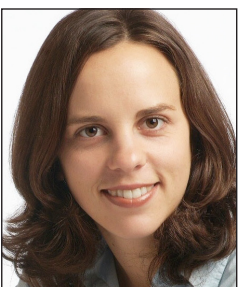
Sally Morris, TGT Legal, Auckland

Sally is an experienced commercial litigator who has represented clients on many complex, high profile and high stakes matters. She has appeared in courts in New Zealand and Australia. Sally now leads the litigation team at TGT Legal, a boutique trust and private client law firm based in Auckland and specialises in contentious trust, estate and relationship property matters.



Juliet Moses, TGT Legal, Auckland

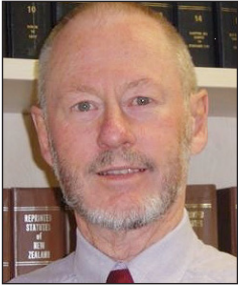
Juliet is a partner at TGT Legal, a boutique trust and private client law firm based in Auckland. She specialises in trusts, personal asset planning and superannuation and is a regular presenter of seminars and author of articles on issues arising in those areas. Juliet has spoken at previous NZLS Trusts conferences, ADLSi conferences, and at STEP (Society of Trust and Estate Practitioners) and NZICA events. She is the chair of the STEP education committee and also published a chapter in the CCH 2011 edition of the *Master Trusts Guide* on the Termination and Insolvency of Trusts. Earlier this year, she co-presented a series of seminars “Trusts for Company and Commercial Lawyers” for NZLS CLE.



Jessica Palmer, Faculty of Law, Otago University, Dunedin

Jessica is an Associate Professor at Otago University and teaches courses in contract, equity and commercial law. She has published articles and essays on issues of equity and restitution and is an author of *Equity and Trusts in New Zealand* (Butler (ed), 2nd ed, Thomson Brookers, 2009). Jessica was a member of the reference group assisting the Law Commission in its recent Review of the Law of Trusts.

SPEAKERS



Bill Patterson, Patterson Hopkins, Auckland

Bill has an extensive trust, commercial and equity litigation practice. He has presented many papers for NZLS CLE, ADLS Inc and the Institute of Chartered Accountants, including all six of the 1999 to 2009 NZLS CLE Trusts Conferences, three of them as chair. Bill also does regular topics for the ICANZ's Trusts Special Interest Group.



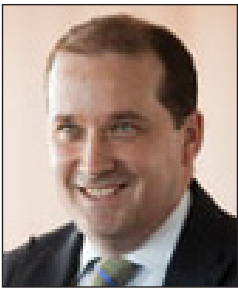
Nicola Peart, Faculty of Law, Otago University, Dunedin

Nicola was appointed to the Law Faculty at the University of Otago in 1987, where her research has focused on family property law, including trusts and succession law, and medical law. She has published several articles on trust law, and is the author of "Trusts" in Nicola Peart (ed) *Brookers Family Property Law* (Thomson Reuters, 2011) and "Equity in Family Law" in Andrew Butler (ed) *Equity and Trusts in New Zealand* (Thomson Brookers, 2009).



Prof Charles Rickett, Dean of Law, AUT University, Auckland

Professor Rickett was Professor of Law at the University of South Australia from 2010 to 2014, and prior to that was Sir Gerard Brennan Professor of Law at The University of Queensland from 2003 to 2010, where he was also Dean of Law from 2003 to 2007. He was a Professor of Commercial Law in The University of Auckland from 1994. He was also Director of the Research Centre for Business Law. Professor Rickett has held teaching appointments at University College London, the University of Cambridge (where he was a Fellow of Emmanuel College), Victoria University of Wellington and Massey University, and has had visiting appointments at The University of Melbourne and the University of Otago. In October 2014 he became the second Dean of AUT Law School in Auckland. He has spoken at numerous international conferences, and has also conducted seminars for the NZLS, the ADLS and many of New Zealand's major law firms. Prof Rickett has presented seminars for the judges of the Supreme Courts of Queensland, New South Wales and South Australia. He has also been involved in a consulting capacity in a range of major equitable and restitutionary commercial litigation in New Zealand.



Andrew Ryan, Minter Ellison Rudd Watts, Auckland

Andrew is a chartered accountant and lawyer, and leads Minter Ellison Rudd Watts' tax team. Named as a leading New Zealand tax practitioner by several international directories, Andrew has particular expertise in corporate taxation, tax disputes, corporate and trust structuring and mergers and acquisitions. Andrew advises a number of clients in relation to the FATCA regime and has presented on the subject at conferences for STEP (Society of Trust and Estate Practitioners) and NZICA's Trusts Special Interest Group.



Stephen Tomlinson, Tomlinson Law, Christchurch

Stephen is a partner of Tomlinson Law, he has lectured in taxation, finance and business law at the University of Canterbury and is a well-known presenter of taxation and trust seminars. He advises accounting firms and law firms on a wide range of tax issues. Stephen is a member of the NZLS taxation committee and was runner up in the CCH Tax Lawyer of the Year category at the 2011 and 2012 New Zealand Law Awards.

SPEAKERS



Graham Tubb, Inland Revenue Department, Wellington

Graham is Group Tax Counsel and leads the Legal and Technical Services group (part of Investigations and Advice) at the IRD. The LTS group is one of the principal technical units within Inland Revenue, and is charged with ensuring that all parts of Service Delivery receive competent professional advice on the revenue legislation, resolving emerging issues, and ensuring that certain key processes have been correctly applied. In addition the group sets standard practices relating to many of the Commissioner's powers. Graham joined Inland Revenue in 2003, prior to which he was a tax and corporate partner at Kensington Swan. Some of the key projects he has worked on include the department's approach to care and management, the use of the Commissioner's search powers, the practical application of the tax avoidance rules, shortfall penalties, the disputes rules including facilitated conferences, and the merger of several earlier groups to form LTS. He is part of the management team of Investigations and Advice, and a member of the department's Technical Governance Committee, National Disputes Committee, and several other governance groups.

DINNER SPEAKER



Hon Robert Fisher QC, LL.D, F.A.M.I.N.Z., Auckland

Robert is an arbitrator, mediator, author and former High Court Judge. He is a regular writer, presenter and after-dinner speaker. Robert has warned us that he will insist on speaking again on this occasion.